



Hiland Willows



AMENITIES

- ▶ AC Community Hall with Pantry & Toilet
- ▶ Generator
- ▶ Adequate Water Supply
- ▶ Exclusive Children play area
- ▶ Adequate car parking
- ▶ Intercom facility
- ▶ Club House
- ▶ Ground coverage below 45%
- ▶ AC Gym with equipment
- ▶ Swimming Pool
- ▶ Indoor Games
- ▶ Cafeteria

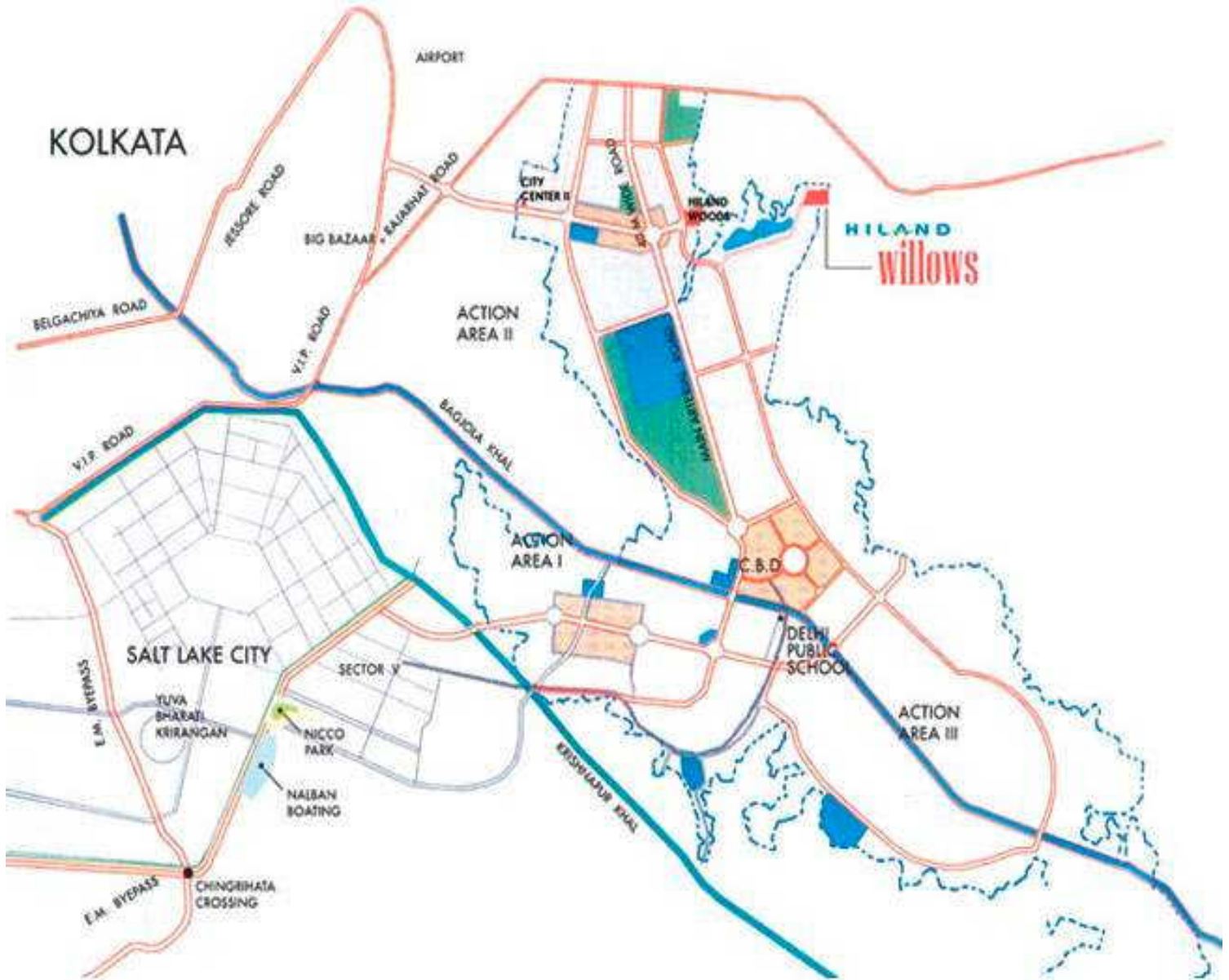
*Parking extra



SPECIFICATION

- ▶ **Structure:** RCC Framed structure :
- ▶ **Flooring:** Flat Area / Lobby - EVERSHINE quality marble slabs
- ▶ **Kitchen:** Marble flooring with polished green marble top and cladding of 2 feet
- ▶ **Toilets:** Flooring – Marble :Dado - Ceramic Tiles (up to door height) :Fixtures - Standard White Porcelain:Fittings - Jaguar Brand Chrome Plated Provision for hot and cold water Wall Finish : Smooth Putty on walls
- ▶ **Doors :** Main Doors - DURO Brand Teak finish flush door with fittings:Other Doors - DURO Brand Fully Painted Commercial flush door with fittings:Balcony - Sliding Aluminum Door
- ▶ **Windows :** Colored Open-able Aluminum Windows
- ▶ **Electrical:** Concealed copper wiring:Modular Switches:Ample points for fan, lights, plug points Power Points for air conditioners, geysers, fridgePoints for telephone & TV in all bedrooms and living room
- ▶ **Grill/Gate:** Grills on all windows. Box Grill in Balcony, Collapsible gate for extra

LOCATION



TYPE, AREA & PRICE

2 BHK UNIT BLOCK 1

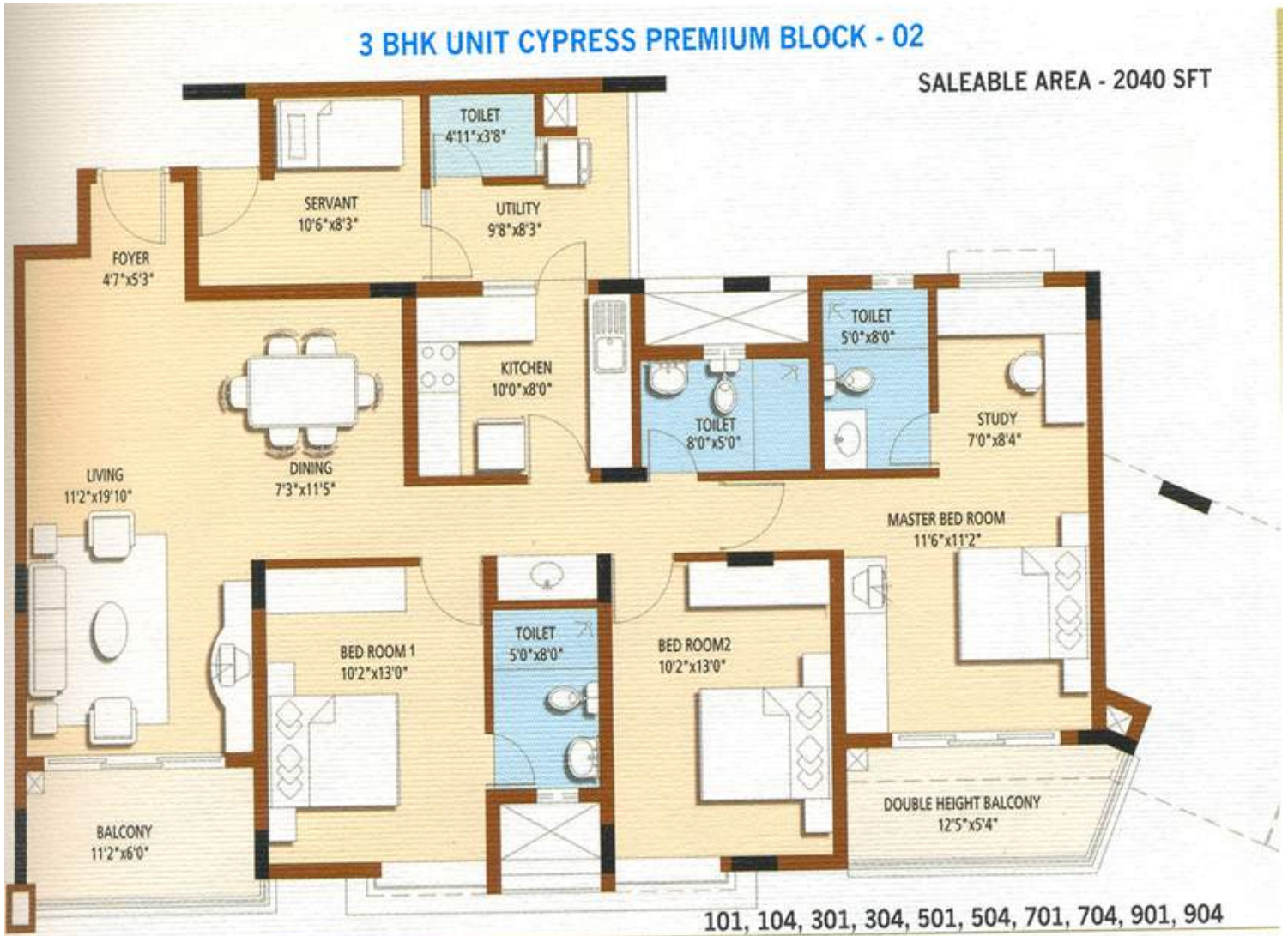
Block- 1



Salable Area - 1553 SFT

OPEN AREA - 428 SFT

Block- 2



Block- 3

2 BHK UNIT WITH STUDY CYPRESS BLOCK - 03

SALEABLE AREA - 1553 SFT



101, 104, 105, 201, 204, 205, 301, 304, 305, 401, 404, 405, 501,
504, 505, 601, 604, 605, 701, 704, 705, 801, 804, 901, 904

Lower Block- 3

LOWER PENTHOUSE UNIT CYPRESS BLOCK - 03

SALEABLE AREA - 3486 SFT
OPEN AREA - 1173 SFT

