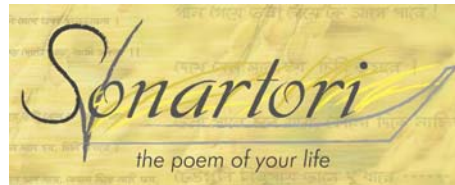


SONARTORI



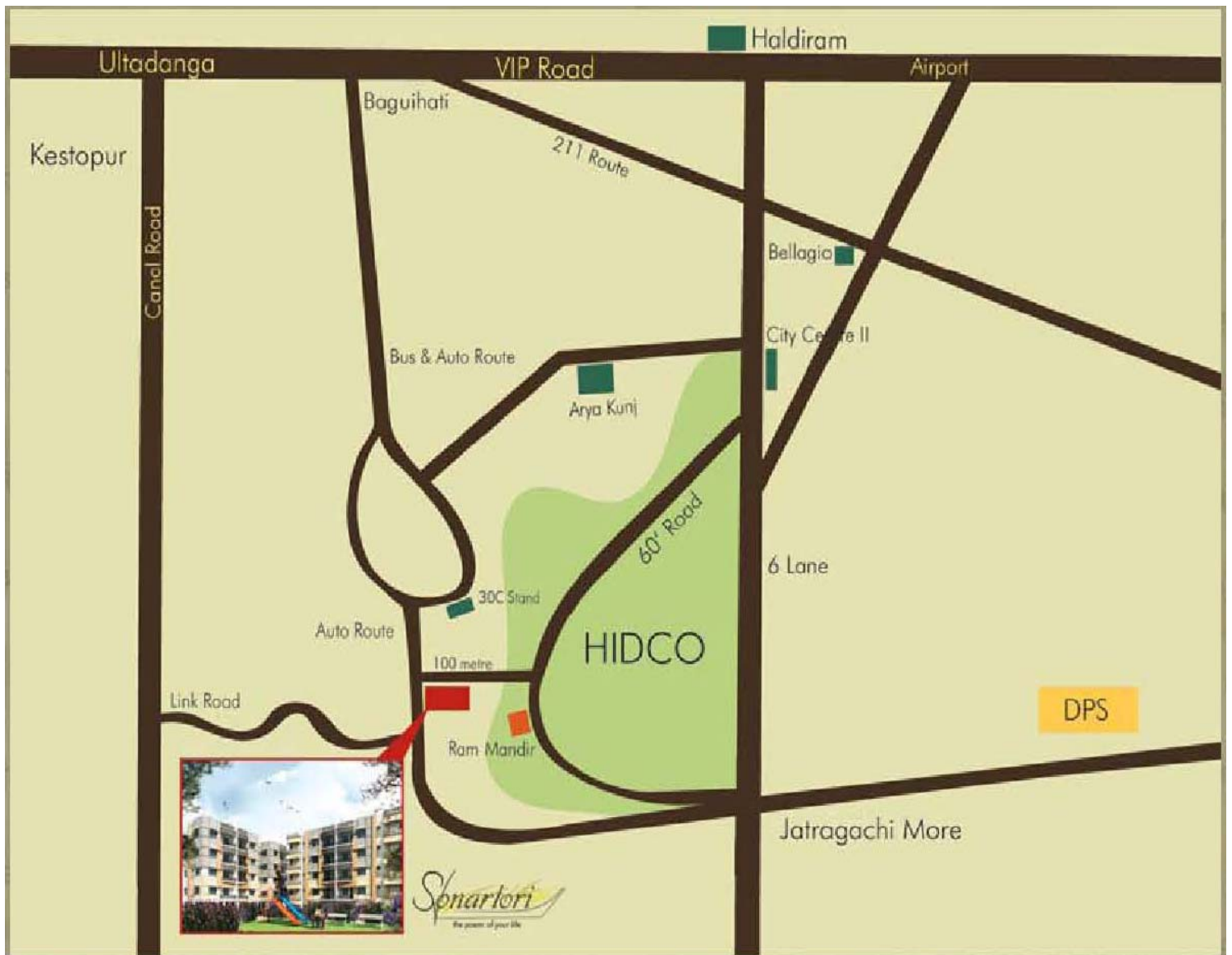
AMENITIES

- ▶ Garden and children's park.
- ▶ Play school.
- ▶ Community hall with lawn.
- ▶ Durga Puja bedi.
- ▶ Walking track.
- ▶ 24 hour security.
- ▶ Power backup.

SPECIFICATION

- ▶ **Structure:**
RCC foundation with RCC framed super structure.
- ▶ **Flooring:**
Ceramic tiles.
- ▶ **Toilets:**
Non-skid ceramic tiles.
Dado of 5' height.
CP fittings of standard make.
- ▶ **Kitchen:**
Black CUDAPPAH/Granite counter & sink.
- ▶ **Doors:**
Frame: Malaysian sal door frame.
Shutter: Enamel finish ISI marked flush doors.
Main Door: Wood finish door.
- ▶ **Window:**
Anodized Aluminum Frame with sliding shutters/MS steel windows.
- ▶ **Electric:**
Fire resistant wire: Anchor.
Switches: Anchor.
- ▶ **Cable:**
Points provided as per convenience.
- ▶ **Elevator:**
One elevator in every block: Standard make.
- ▶ **External finish:**
Water based paint.

LOCATION



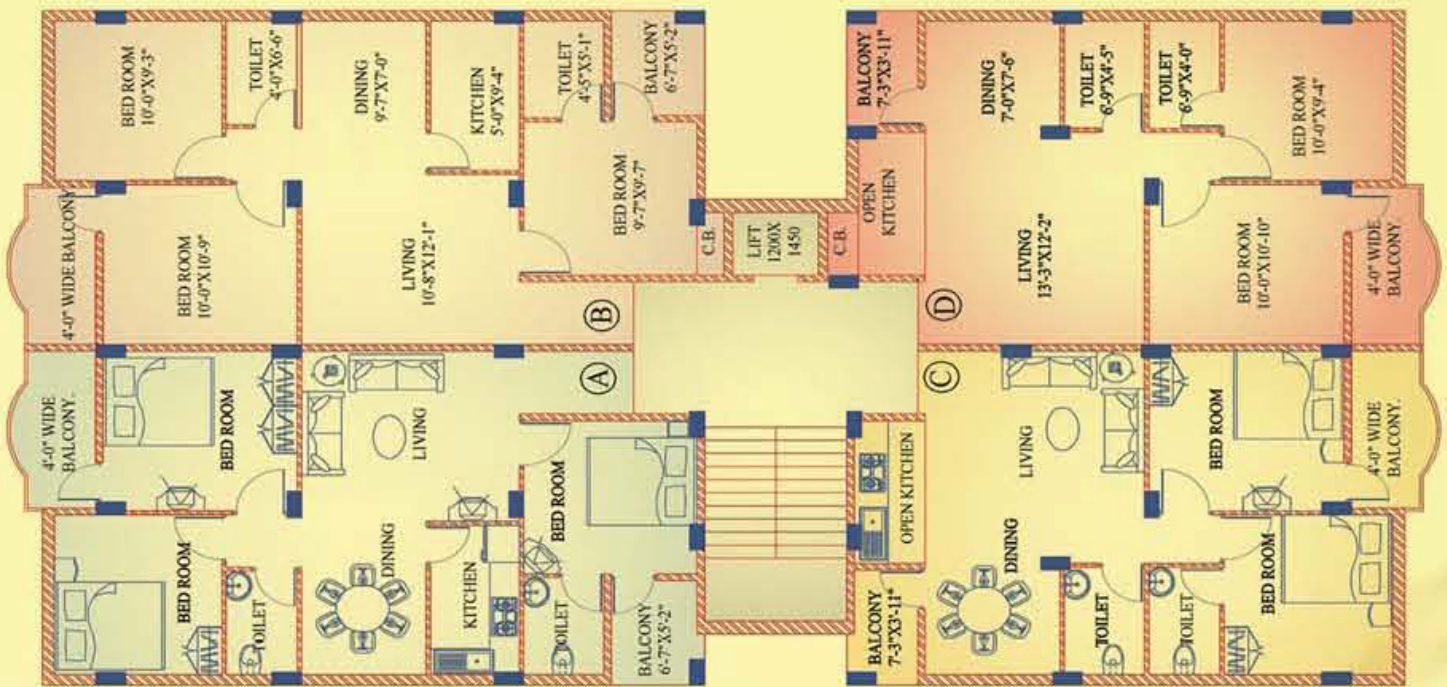
TYPE & AREA

Block Layout



Block- 1

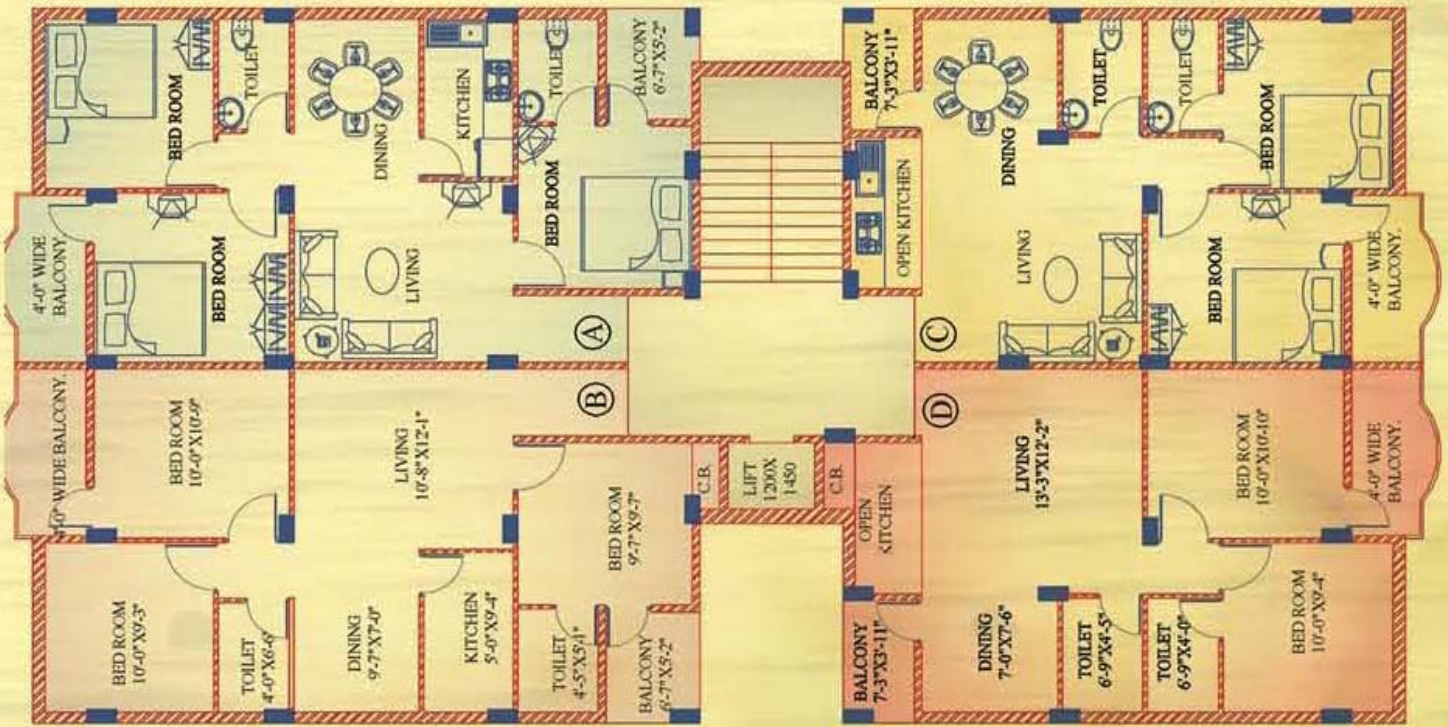
Poroshpathor



Block 1

Block- 2

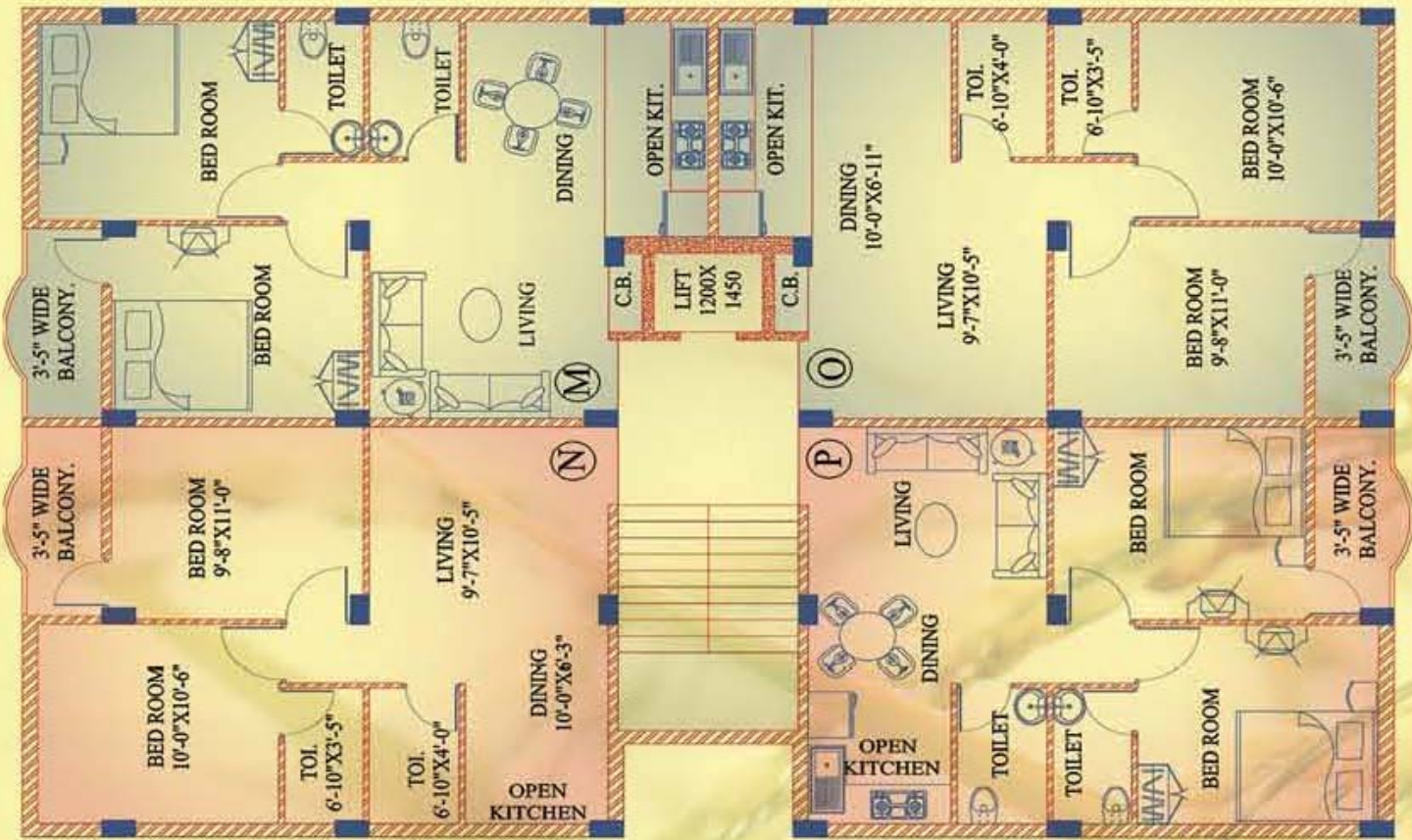
Bosundhora



Block 2

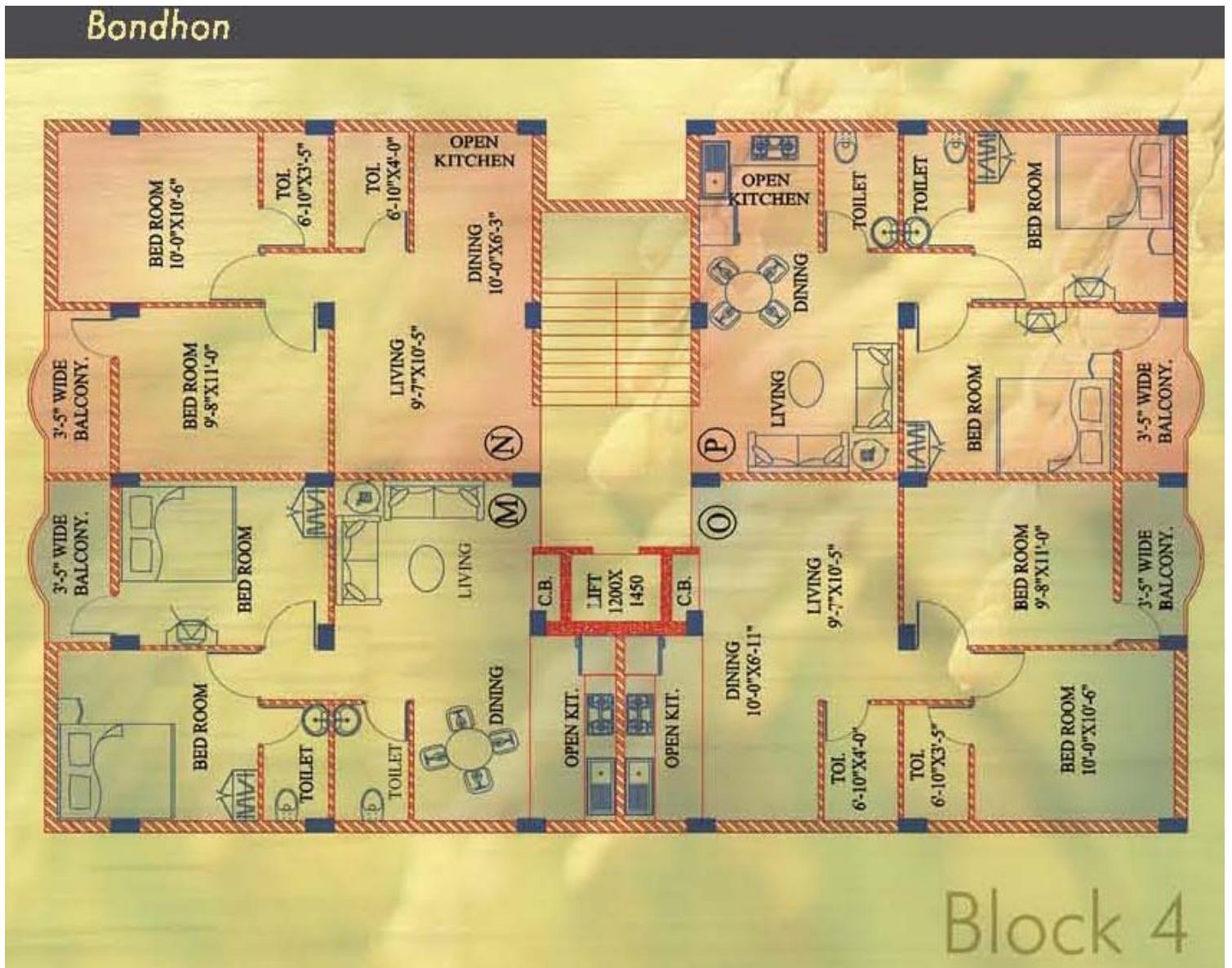
Block- 3

Mansundori

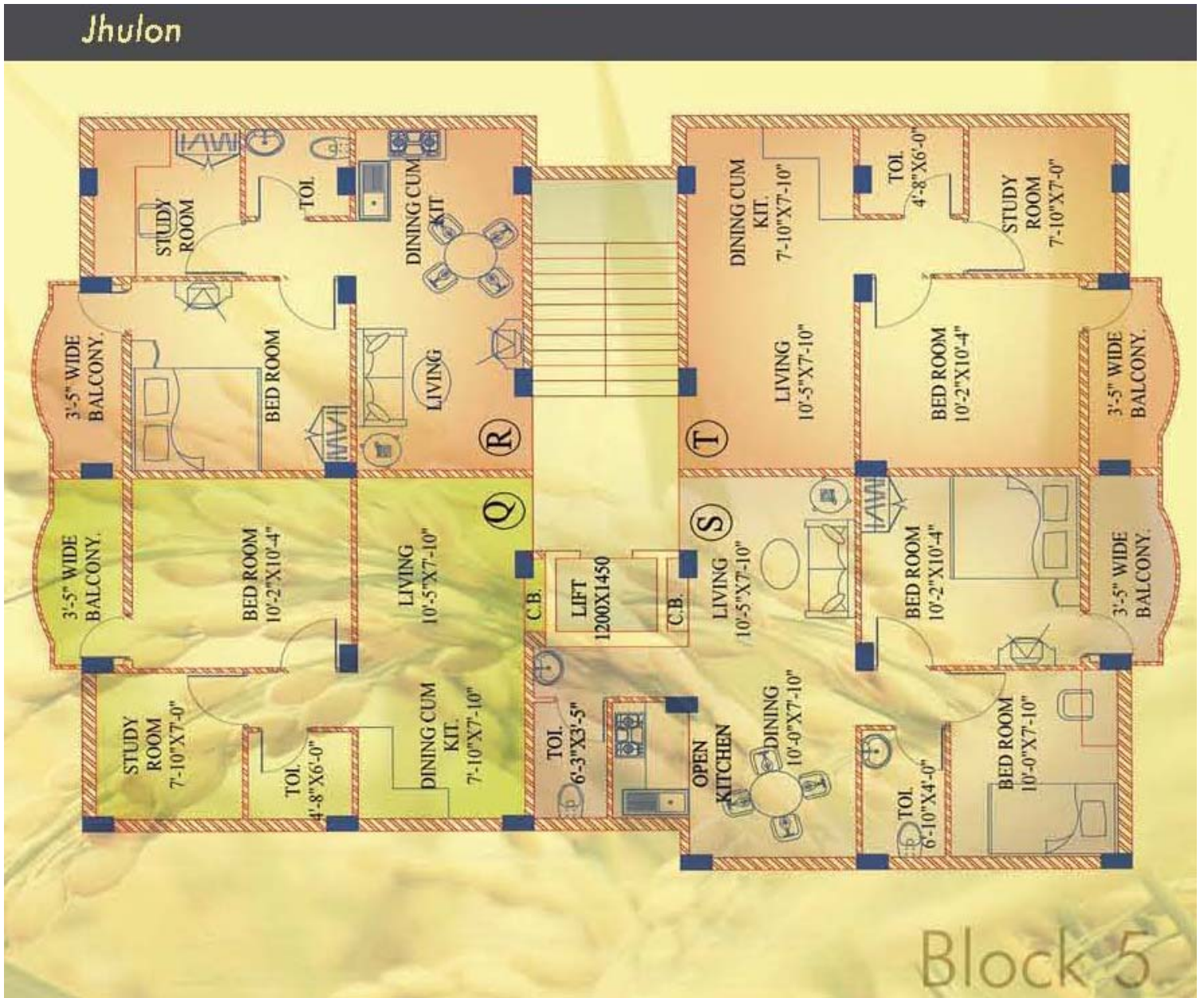


Block 3

Block- 4

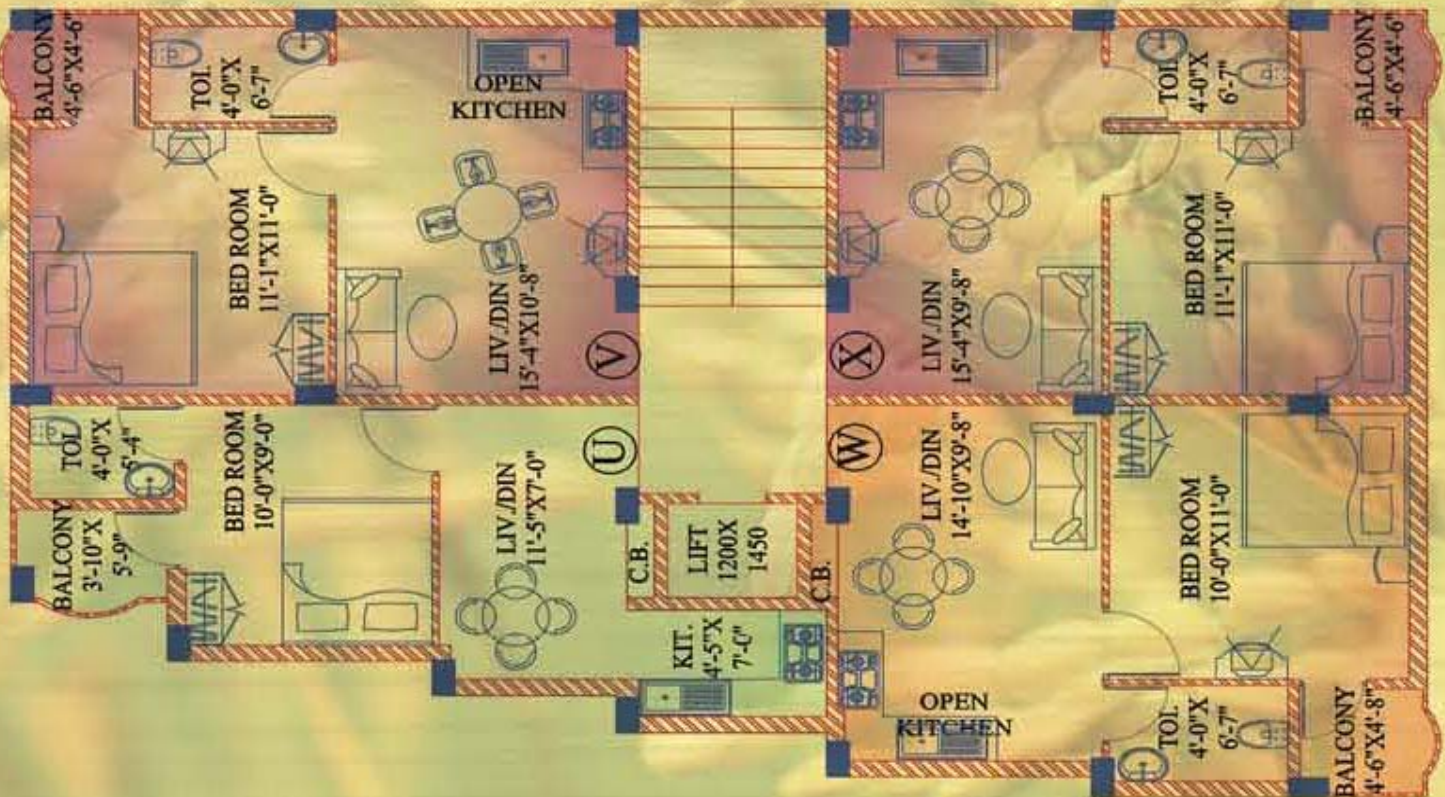


Block- 5



Block- 6

Puraskar



Block 6