

The
IVORY
TOWERS



UNMATCHED AMENITIES

- ▶ Intercom with Video door phone
- ▶ 24 hrs emergency power back-up (DG)
- ▶ Sky Lounge on Terrace with Bar-B-Q
- ▶ Sit-out area on first floor common terrace
- ▶ Community hall with Garden
- ▶ Filtered water supply
- ▶ Gymnasium
- ▶ Wi-Fi high speed internet connectivity
- ▶ Children's play area

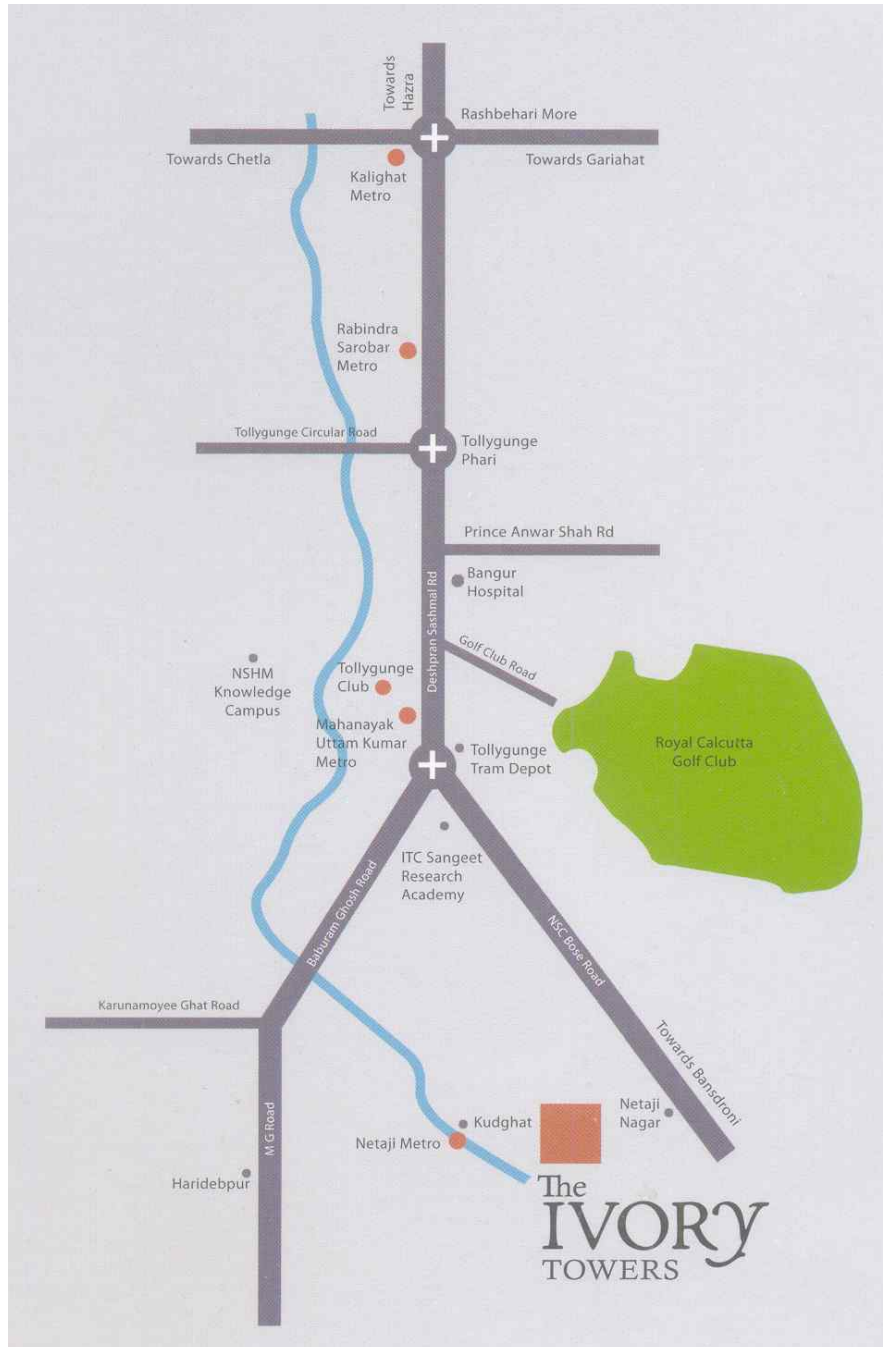
SPECIFICATIONS

- ▶ **Structure:-** RCC framed structure with anti-termite in foundation
- ▶ **Lobby with Structure at entrance:-** A spacious landscaped lobby welcomes each resident to his abode, complete with a reception, postal boxes and well lit landing.
- ▶ **Landscaping:-** A picturesque landscaping strewn with flower beds and structured with a variety of flora and fauna has been designed to give that feeling of the great outdoors.
- ▶ **Floor:-**
 - Master Bedroom-** Laminated wooden flooring.
 - All other Bedrooms-** Vitrified tiles of reputed make.
 - Living Room-** Vitrified tiles of reputed make.
 - Kitchen-** Anti skid tiles.
 - Toilet-** anti skid tiles.

- ▶ **Toilet:-** Anti skid tiles of reputed make on the floor and walls up to door height. Hot and cold water points via CPVC pipes. Western style sanitary fittings of Parryware/Hindustan/RAK or equivalent make.
- ▶ **Kitchen:-** Granite Platform with dado tiles up to 2' height above the counter along with a stainless steel sink. Hot and Cold water points are provision for installing an exhaust fan.
- ▶ **Doors & Windows:-**
 - Frame-** Sal wood
 - Shutter-** Flush Door
 - Main Door-** Solid Flush Door. Brass and Stainless Steel hardware fittings of reputed make Aluminum/UPVC windows will be provided. Steel railings will be provided in the balconies.
- ▶ **Wall Finishes:-**
 - Interior-** All wall finishes will be done with Plaster of Paris, providing a smooth and even base.
 - Exterior-** The external façade will be painted with weather proof paints for that premium look that lasts for years to come
- ▶ **Electric Points:-** Every apartment will have an adequate number of electric points and switches to accommodate all the necessary gadgets and equipment. Provision for split AC in living and dining room. Modular switches of reputed make.
- ▶ **Telephone/Cable TV:-** Telephone, Cable TV points in living and dining rooms.
- ▶ **Lift/Service Lift:-** Top of the line elevators like Otis or equivalent will be installed for the comfort and convenience of the residents.
- ▶ **Fire:-** Adequate Fire Fighting equipment and fire alarm system will be installed to protect against the hazards of time.

LOCATION

The Ivory Tower is located in an unbeatable location, in the heart of South Kolkata, near Kudghat Metro station. It enjoys good connectivity to all the major landmarks of the city. The road to the project is dotted with numerous renowned schools, colleges, hospitals, shopping malls and entertainment centers. As it is in close proximity to the Metro station, one can reach most parts of Kolkata within a short span of time. The RCGC golf club, India's oldest and prestigious golf club, is a stone's throw away from the project.



TYPE & AREA

Typical Floor Plan



TYPICAL FLOOR PLAN

**1st Floor Plan
Flat- A**



FIRST FLOOR FLAT A

**10th Floor Plan
Flat- A**



10 TH FLOOR FLAT A

**11th Floor Plan
Flat- A**



11 TH FLOOR FLAT A

Flat- A



**1st Floor Plan
Flat- B**



**10th Floor Plan
Flat- B**



**11th Floor Plan
Flat- B**

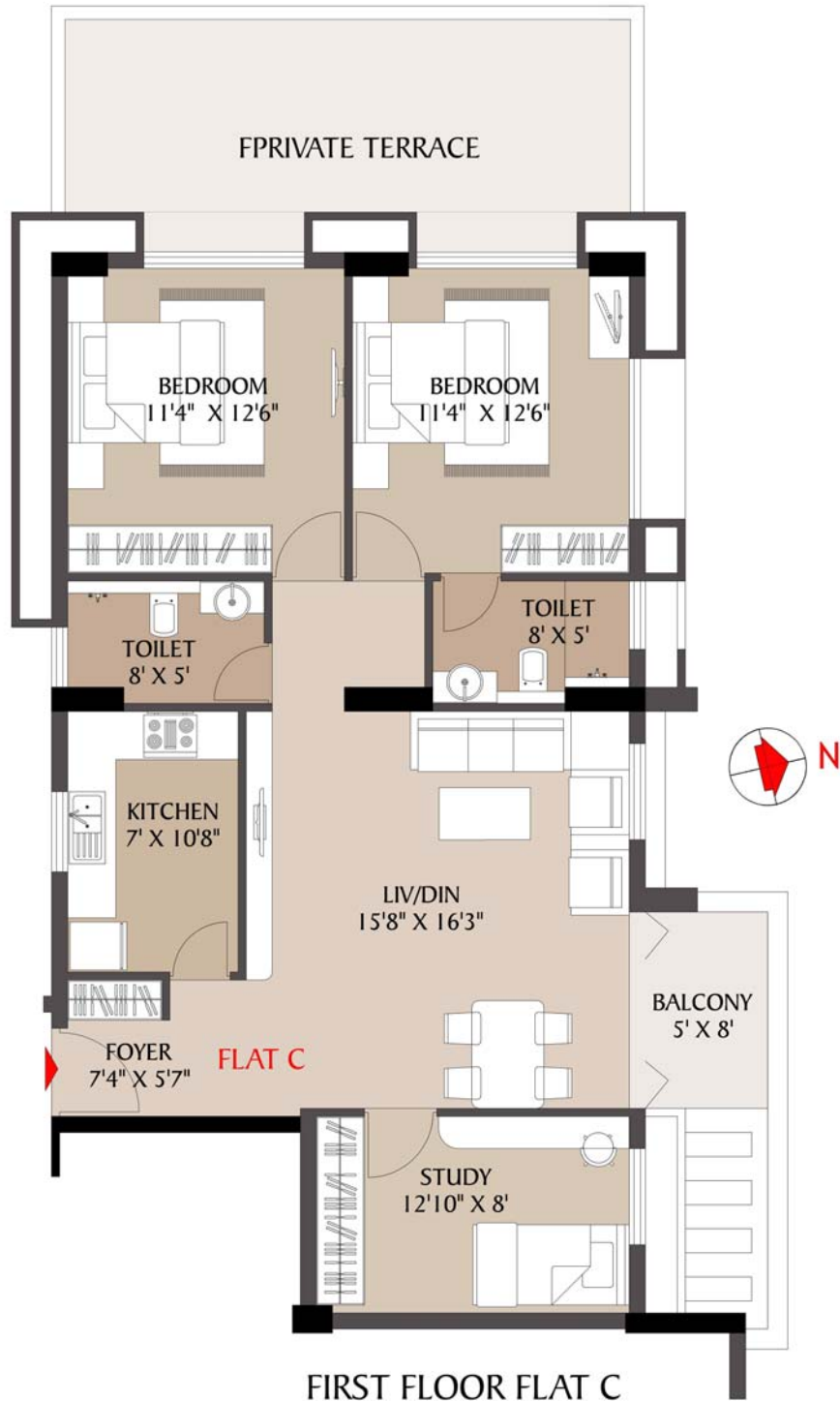


Flat- B

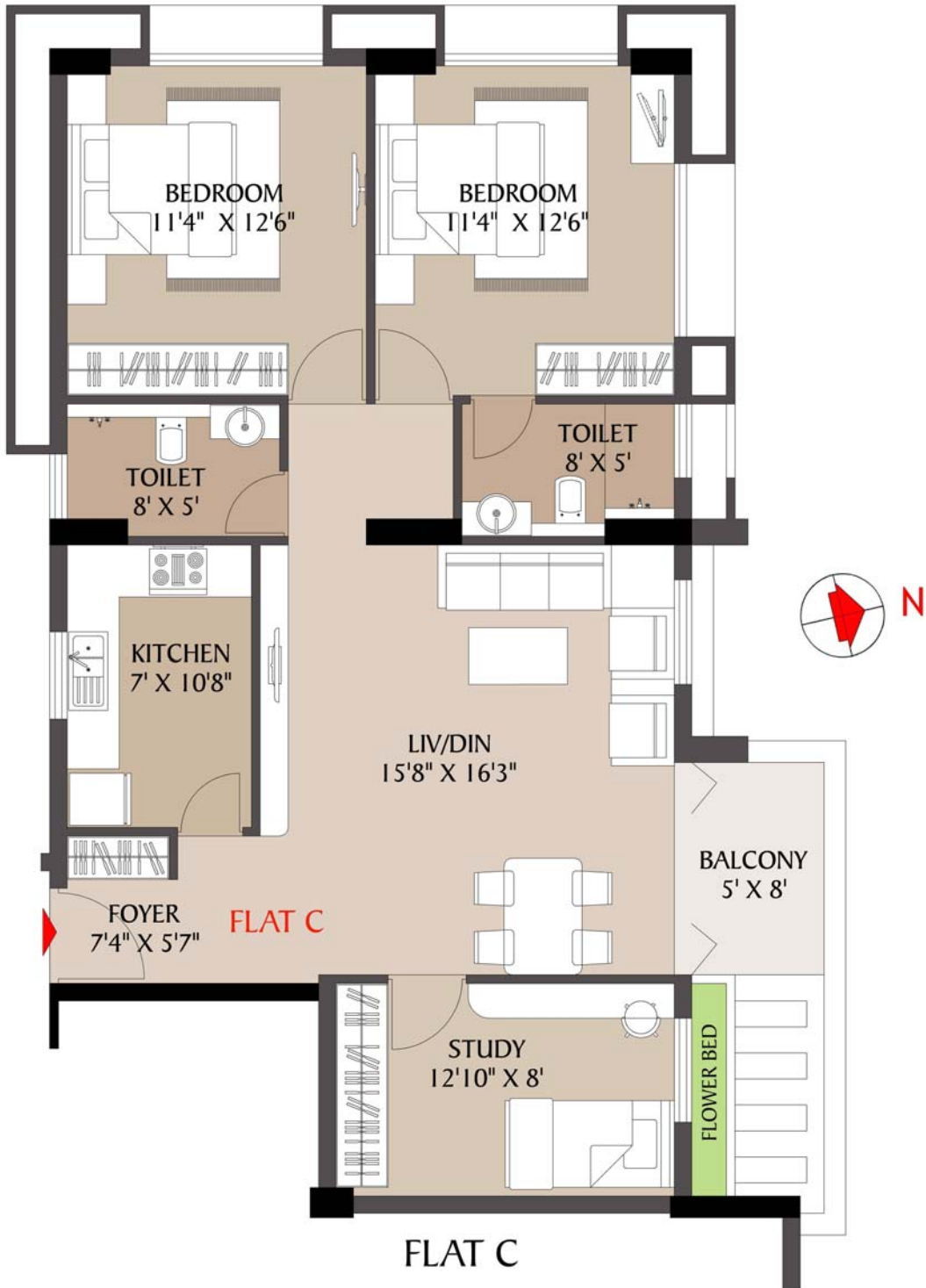


FLAT B

**1st Floor Plan
Flat- C**



Flat- C



11th Floor Plan



11TH FLOOR PLAN

Flat- D



DEVELOPER

Shristi Comotrade Pvt. Ltd.