

## Westwind Debaangan



**Belur, Kolkata**  
Live in Devinity

### INTRODUCTION

Westwind Debaangan is a devout thought from Keventer Projects Limited, the people behind Kolkatas first ISO 14001-2004 certified residential project, Westwind? known for its unique blend of architectural competence and infinite comfort. The complex will consist of seven G+4 buildings. The blocks will be separated by a lush stretch of green, dotted with colourful beds of exotic flowers. There will be a mix of one, two and three bedroom flats starting from 776 sq ft to 2031 sq ft in size. The complex will also house shops to cater to everyday common needs of the residents.

## AMENITIES

- ▶ AC Community Hall with Vitrified tile flooring
- ▶ AC TV Lounge with Home Theatre System.
- ▶ Modern Indore games 24hours security system.
- ▶ Generator for power backup
- ▶ AC Health Club with multi-Gym.



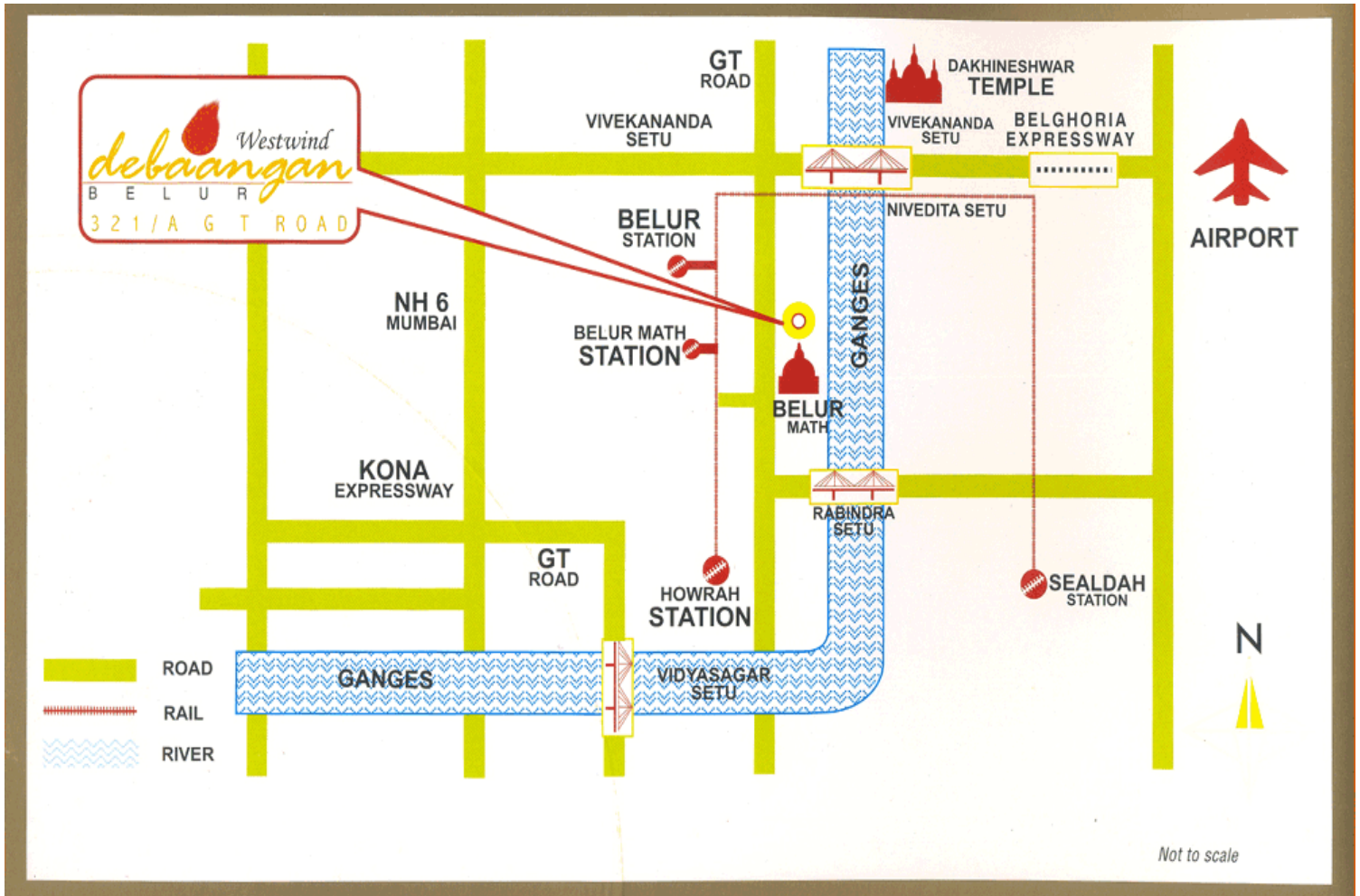
## SPECIFICATIONS

- ▶ **Structure:** RCC Frame.
- ▶ **Walls:** Impeccable Brick Work.
- ▶ **Living and Dining room:** Vitrified tiles
- ▶ **Bed Rooms:** Ceramic tiles
- ▶ **Toilets:** Ceramic tiles, Glazed tiles up to 7 ft on the walls. Good quality European water closet with shower and water basin. concealed hot and cold line.
- ▶ **Kitchen:** vitrified Tiles, Glazed tiles up to 2 ft on the walls. Stainless steel sink, Counter top with black granite.
- ▶ **Common Lobby:** Stone, Tiles
- ▶ **Doors:** Timber Frame - Malaysian Sal or equivalent. Alluminium windows.
- ▶ **Internal Finish:** plaster of paris.
- ▶ **Electrical:** Concealed copper wiring.



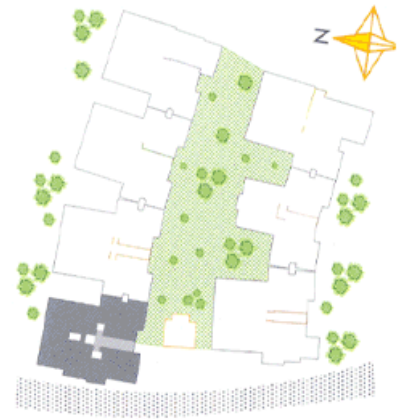
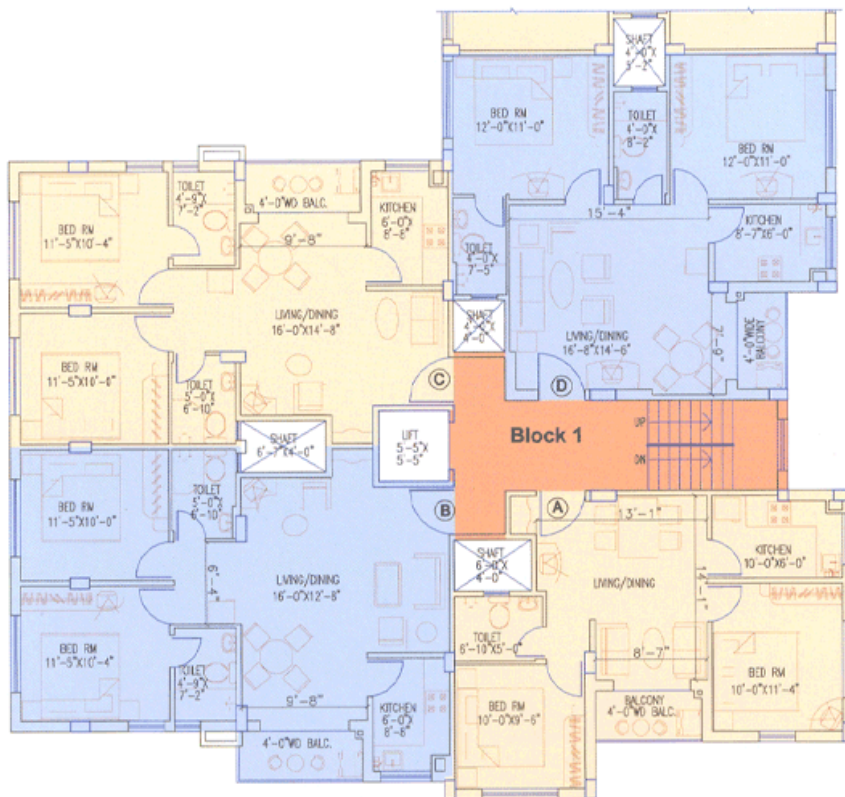
**LOCATION**

Very close to Belur Math



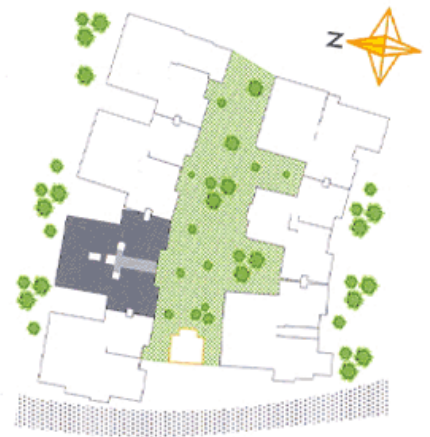
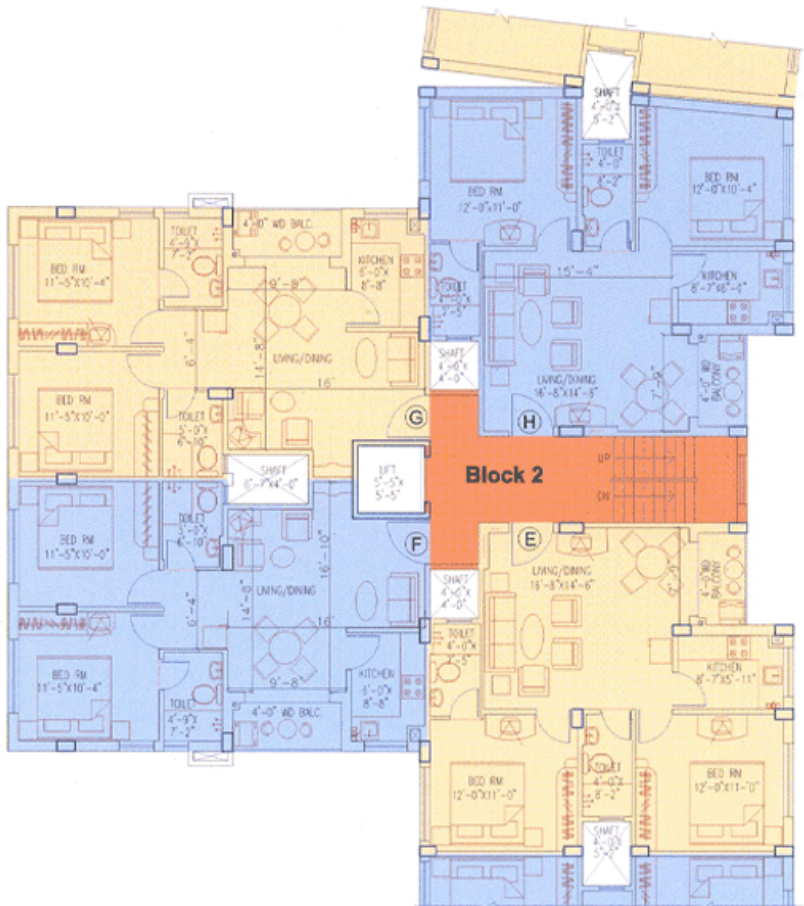
**TYPE & AREA**

**Block- 1 (2BHK)**



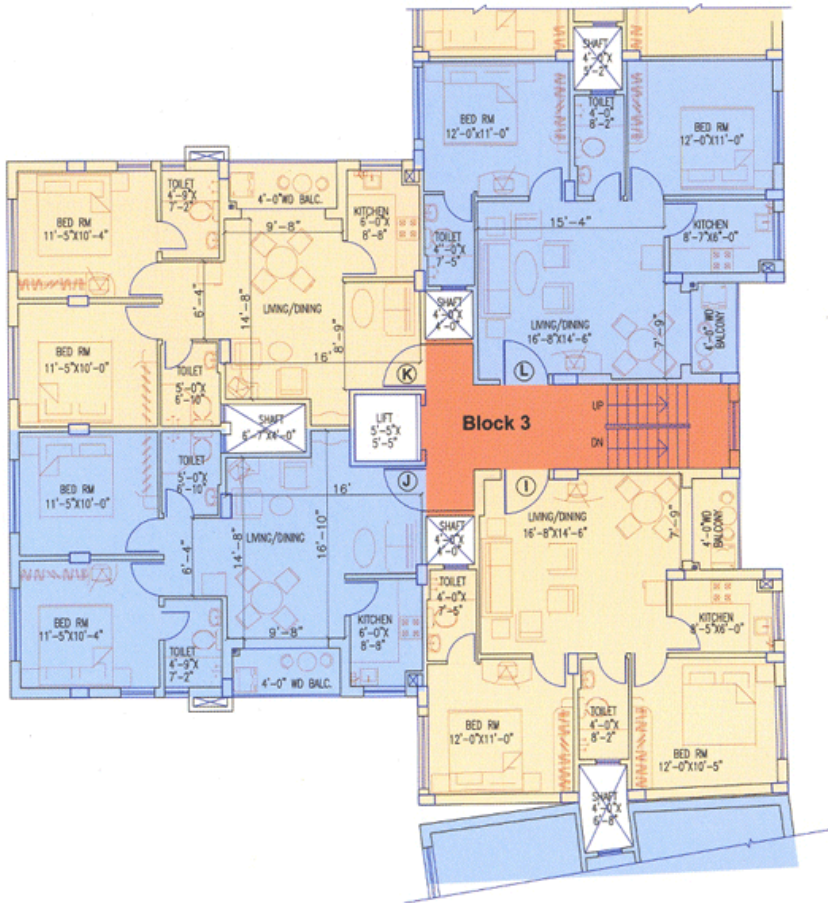
FLAT NO	AREA (sq.ft)	BHK
A	776	2
B	999	2
C	915	2
D	925	2

**Block- 2 (2BHK)**



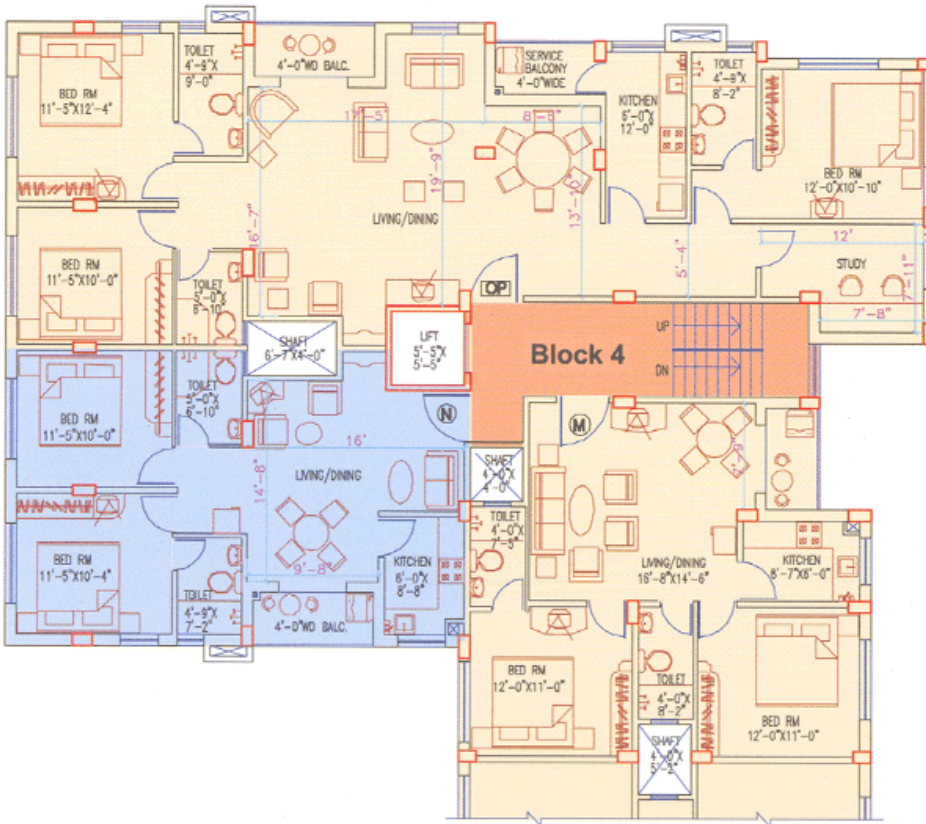
FLAT NO	AREA (sq.ft)	BHK
E	925	2
F	915	2
G	915	2
H	959	2

**Block- 3 (2BHK)**



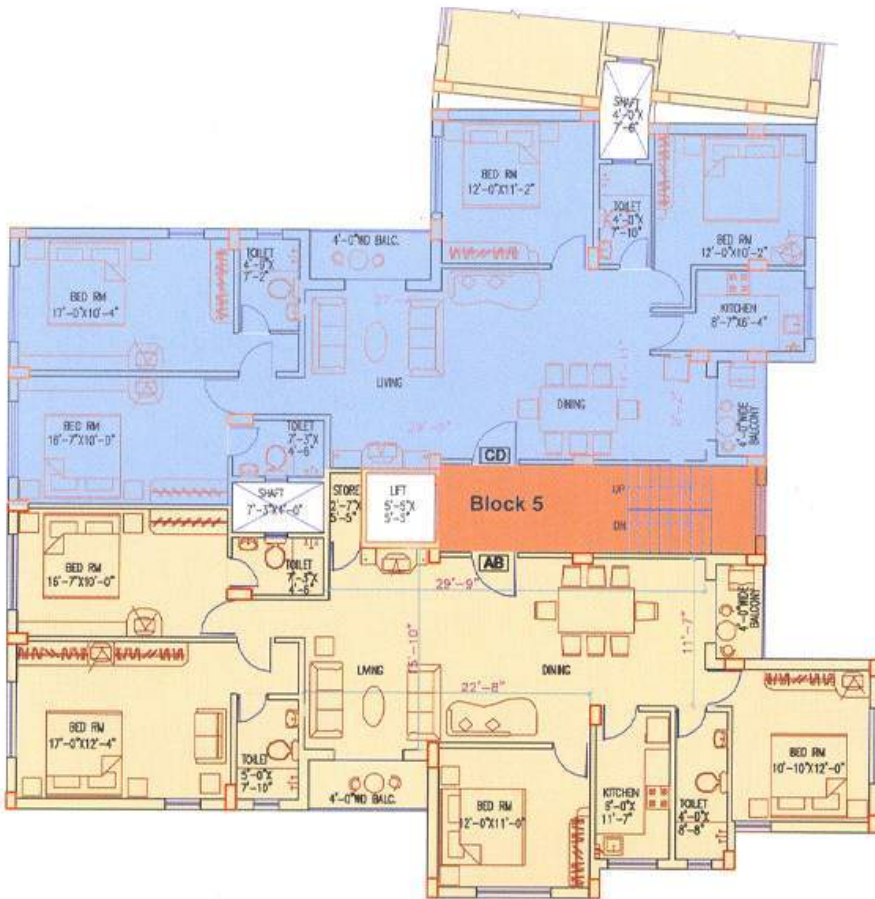
FLAT NO	AREA (sq.ft)	BHK
I	931	2
J	915	2
K	915	2
L	925	2

**Block- 4**



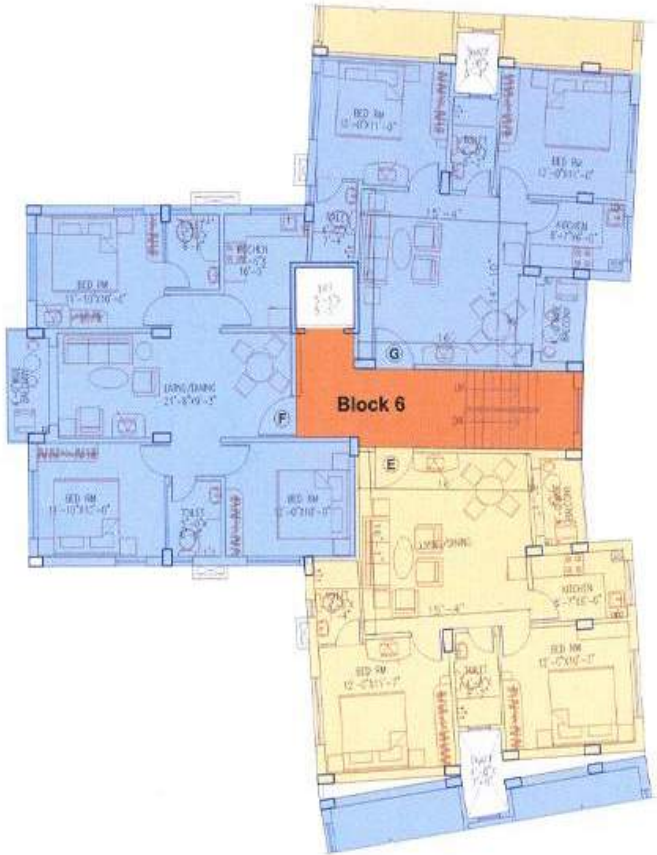
FLAT NO	AREA (sq.ft)	BHK
M	925	2
N	915	2
OP	1858	3

**Block- 5**



FLAT NO	AREA (sq.ft)
AB	2031
CD	1888

**Block- 6**



FLAT NO	AREA (sq.ft)	BHK
E	967	2
F	1120	3
G	938	2

**Block 7**



FLAT NO	AREA (sq.ft)	BHK
H	936	2
I	915	2
J	1001	2
K	913	2

## DEVELOPER



### Keventer Group

With the sole objective of providing people with quality life, Keventer Group set out for its adventurous, challenging and extremely rewarding voyage. With as diverse interests as Dairy, Beverages, Real Estate, Infrastructure Development, Keventer has accomplished its goals, surpassed its set targets and is constantly setting new challenges for itself. It is touching every facet of human life, influencing it in a positive way by providing utmost health and happiness to people.

## ARCHITECT

### Agrawal & Agrawal

Agrawal & Agrawal, Kolkata and Baroda, have established their own niche in producing highly innovative, aesthetic and functional designs for both residential and commercial complexes. Besides designing the twin tower Infinity complex, Kolkata first intelligent building complex, as well as Forum, the city most happening shopping mall and multiplex, Mr JP Agrawal has emerged as the most sought after designer of some of the imaginative and striking landmarks on Kolkata fast changing skyline. He is also the visionary designer for Siddhas ongoing Raj Aangan project in Jaipur.

## BOOKING & PAYMENT

As per construction