

Bengal Unitech Fresco



## SPECIFICATION

- ▶ **Structure:** Earth-quake resistant RCC framed construction.
- ▶ **Lift Lobby/Entrance Lobby:** Marble/Granite.
- ▶ **External Walls:** Cement based paint.
- ▶ **Internal Walls:** Plaster of paris punning over cement plaster.
- ▶ **Living/Dinning Floor:** Vitrified Tiles.
- ▶ **Bedrooms:** Vitrified Tiles.
- ▶ **Kitchen Floor:** Ceramic Tiles.
- ▶ **Kitchen Counter:** Granite Counter.
- ▶ **Kitchen Wall Finishes:** Ceramic Tiles up to 2' above working platform.
- ▶ **Fitting/Fixtures in Kitchen:** CP Fitting, SS Sink & Drain Board.
- ▶ **Bathrooms Flooring:** Ceramic Tiles.
- ▶ **Bathrooms Walls:** Ceramic Tiles upto ceiling.
- ▶ **Bathrooms Fittings:** White sanitary fixtures & CP fittings.
- ▶ **Balconies:** Ceramic Tiles.
- ▶ **Windows:** Aluminium Glazing.
- ▶ **Doors:** Hardware frames with flush door shutter.
- ▶ **Electrical:** Copper electrical wiring in concealed conduit with TV points and modular switches.
- ▶ **Fitting/Fixtures:** Intercom Facility.
- ▶ **Power Back up:** 100% (Extra Charge).
- ▶ **Air Conditioning:** Provision of conduits and drainage pipes for air conditioning (for split air conditioning).

## LOCATION

New Town, the future CBD of West Bengal and Eastern India, has premium health centers such as the Apollo Hospital nearby, along with reputed educational institutions like Delhi Public School, Techno India. Tata Memorial Hospital and OHIO hospital is nearing completion.

Hospital planned development is a feature of New Town. Huge stretches of the urban landscape have been earmarked to accommodate large lakes, outdoor recreation areas & parks, landscaped canals, urban forestry and horticulture. 4 International hotel brands are coming up in close proximity to Uniworld City. Best planned IT destination of Eastern India has operation IT/ITES SEZ—"Infospace" and in pipelines are IT parks, commercial & shopping complexes, an art centre, a recreational zone with a country club, water sports & the ecological park. The police Station close to Uniworld City is nearing completion.

With the New Town expressway connecting EM Bypass and VIP Road, Salt Lake and NH-34, Dum Dum stations is less than 9 km from the Uniworld City and the airport just 10 minutes away. The proposed MRT (metro Railway Terminus) will originate from New Town and terminate at Howrah.





**TYPE & AREA**

**Master Plan**

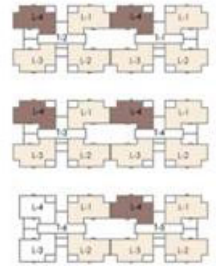
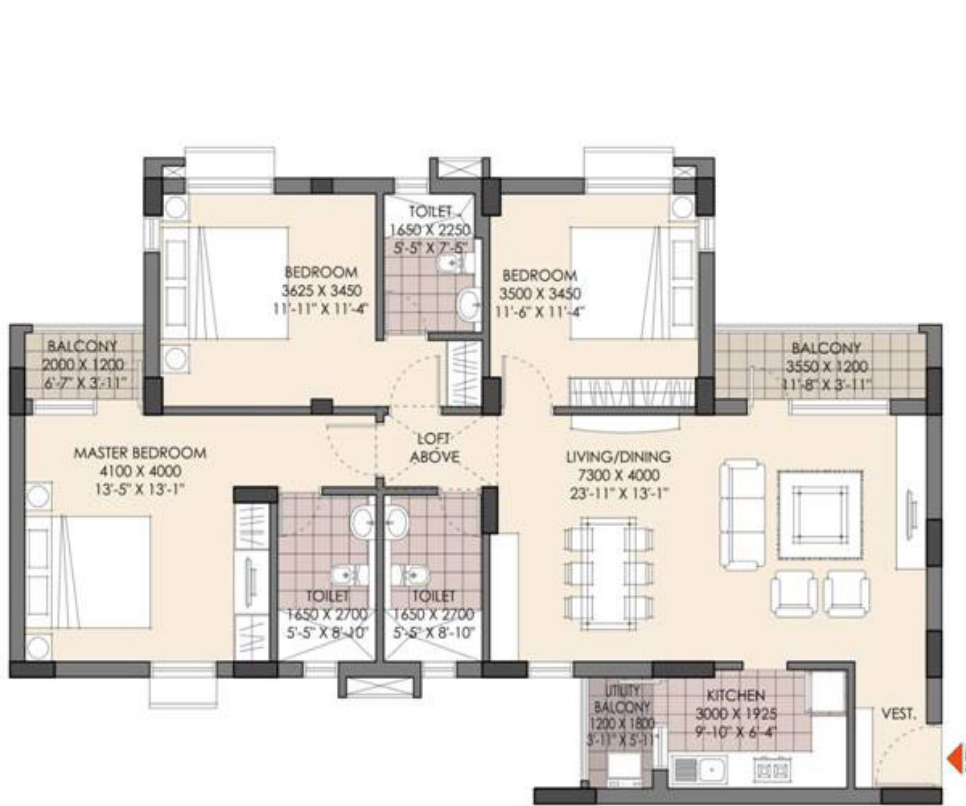


Layouts are subject to change

**Typical Floor Plan Tower 2 & 3**



**Apartment Type B, typical 3 BHK**



TOWER	T - 1, 2, 3, 4 & 5				T - 6	
LOCATION	LOC - 1	LOC - 2	LOC - 3	LOC - 4	LOC - 1	LOC - 2
APARTMENT NO	201 - 1501	202 - 1502	203 - 1503	204 - 1504	201 - 1501	202 - 1502
SUPER BUILT UP AREA [sq.m.]	150.22	150.22	150.22	150.22	150.22	150.22
SUPER BUILT UP AREA [sq.ft.]	1617	1617	1617	1617	1617	1617



**DEVELOPER**

**Unitech Group**