

Siddha Pines



Rajarhat, Kolkata



INTRODUCTION

Life is all about moving up the ladder and moving ahead with the times. Shift to Siddha Pines. Built on acres of sprawling landscaped greens on Rajarhat main road. Soon to be home to countless happy families. With the wind whistling through the pines and the refreshing fragrance of the blossoms, you will find life at Siddha Pines so complete, that you would never want to leave home. It sits in the heart of the Eastern Megacity, the planned, un-congested and un-polluted residential utopia. With Malls, Hotels, Schools, Hospital, Banks, Post Offices and a market within easy walking distance, lifestyle is just a stone's throw away & well connected too. Eco-friendly Siddha Pines bridges connectivity with serenity.

AMENITIES

- ▶ Embark Point- Well Decorated Lobby
- ▶ Pine grove Park- Landscaped Green Areas and Children`s Play Area
- ▶ Global Village- Residents` Club
- ▶ Pine Apple - Cyber Cafe
- ▶ Lily Pool - Swimming Pool
- ▶ Take Care - Health Club
- ▶ Powerhouse - Gymnasium
- ▶ Bookery- Library
- ▶ Cones & Needles- Air-conditioned Banquet Hall connected with the Lawn
- ▶ Gambit- Indoor and Outdoor games

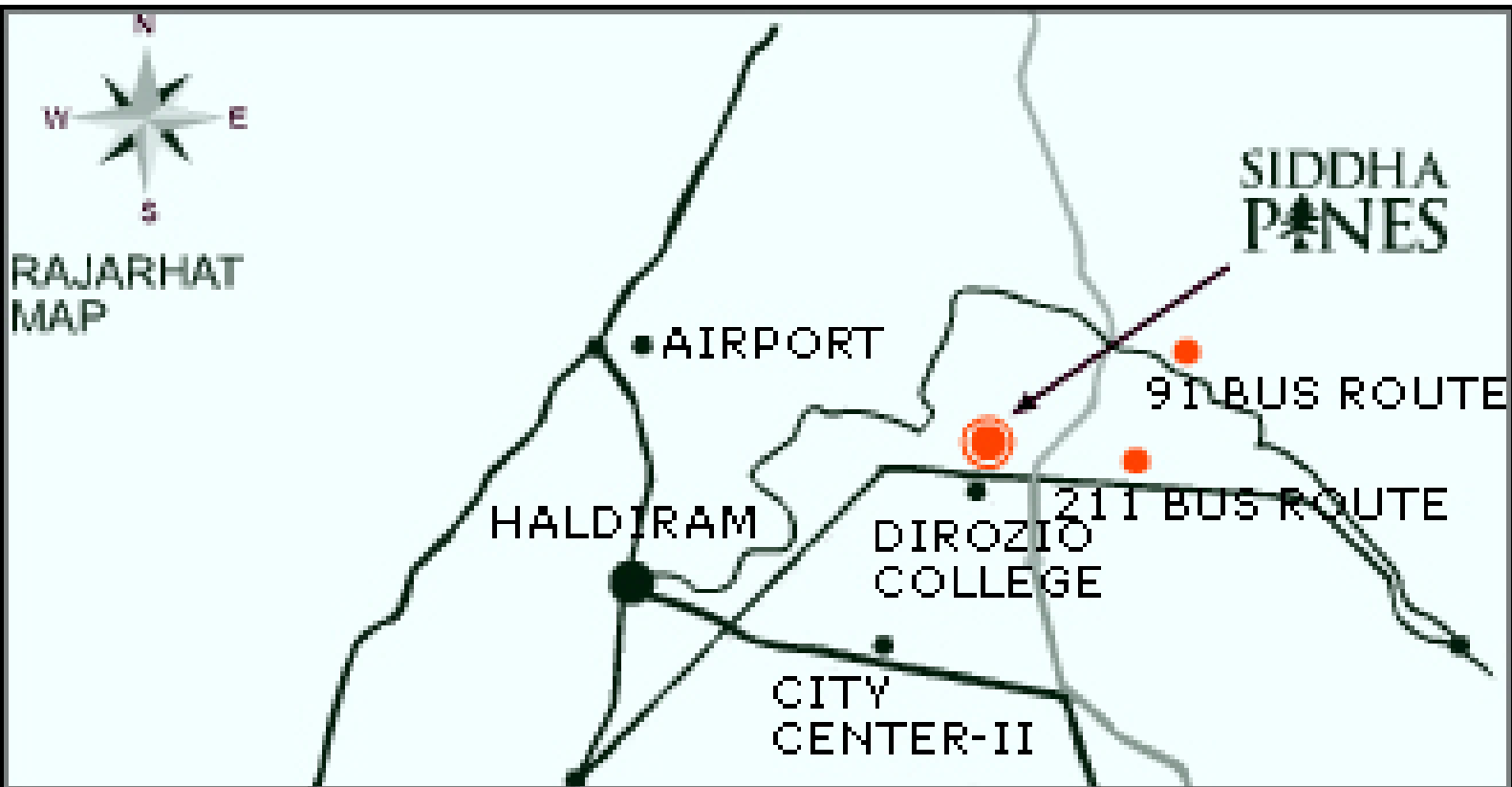


SPECIFICATIONS

- ▶ **Structure:** Earthquake resistant RCC framed construction with infill brick walls.
- ▶ **Internal Walls:** Cement plastering overlaid with smooth, impervious plaster-of-Paris
- ▶ **Doors:** Doors with tough timber frames and solid-core flush shutters.
- ▶ **Windows:** Aluminum frames with fully glazed shutters and superior quality fittings.
- ▶ **Flooring:** Vitrified tile flooring in all Bedrooms, Living/Dining Room and Common Areas
- ▶ **Kitchen:** Vitrified/Ceramic tiles, Counter Tops, Granite with steel sink with draining board, Dados
Ceramic tiles up to a height of 2 feet from the granite top.
- ▶ **Toilet:** Floor Ceramic tile flooring, Dados Ceramic tiles up to a height of 7 feet.
- ▶ **Sanitaryware:** White, high quality porcelain fittings of Parryware or equivalent. Chromium-plated fittings of Jaquar or equivalent. Geyser points in all bathrooms and one washing machine point.
- ▶ **Electricals:** Superior quality concealed copper wiring with the latest modular switches and miniature circuit breakers. TV socket and broadband connection.
- ▶ **Telephone Wiring:**
Central distribution box at ground floor with a network of in-built telephone wiring to each apartment, with provision for outlet points in the master bedroom and other areas of the apartment.
- ▶ **Exterior:** Latest weatherproof non-fading exterior finish of the highest quality.

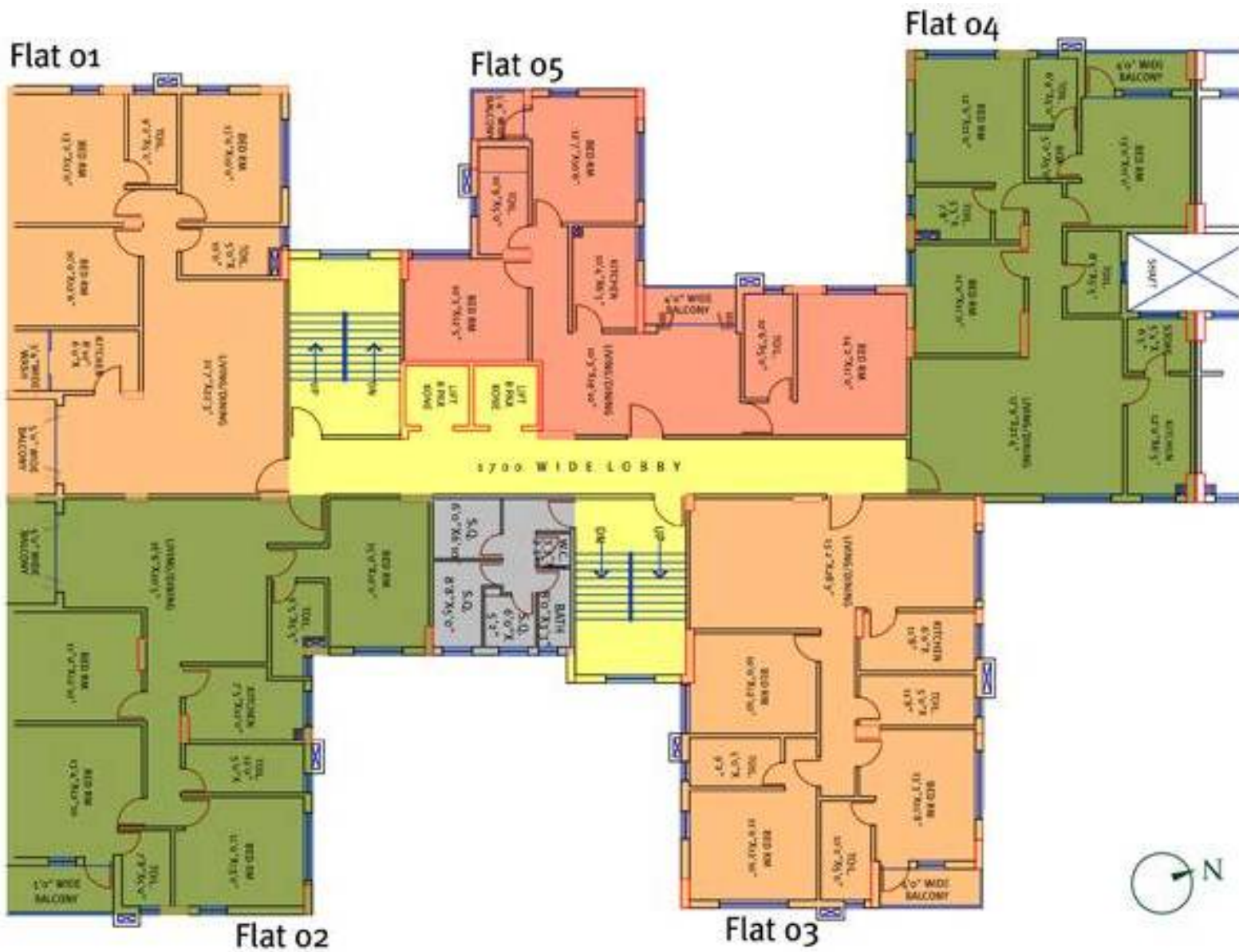


LOCATION

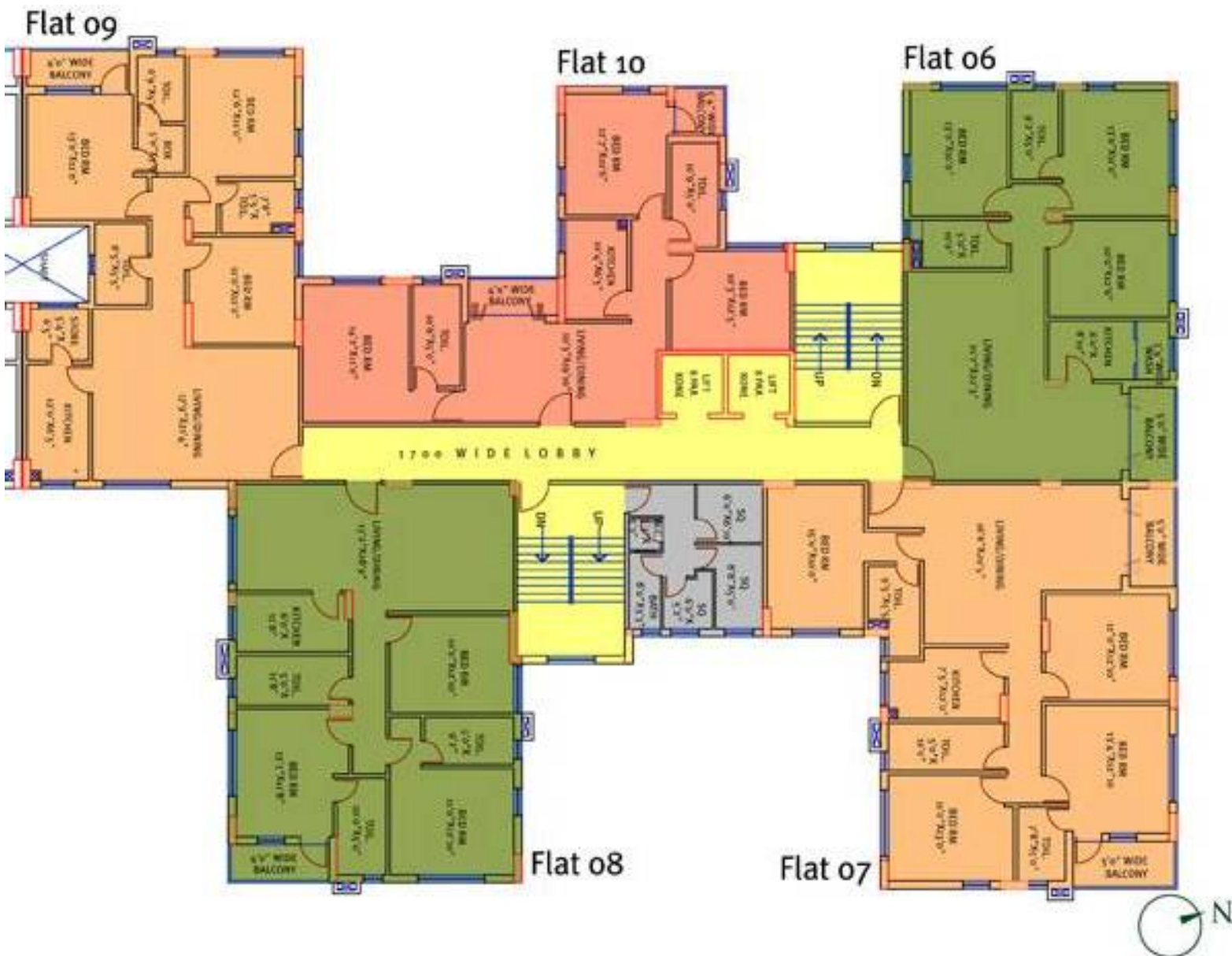


TYPE & AREA

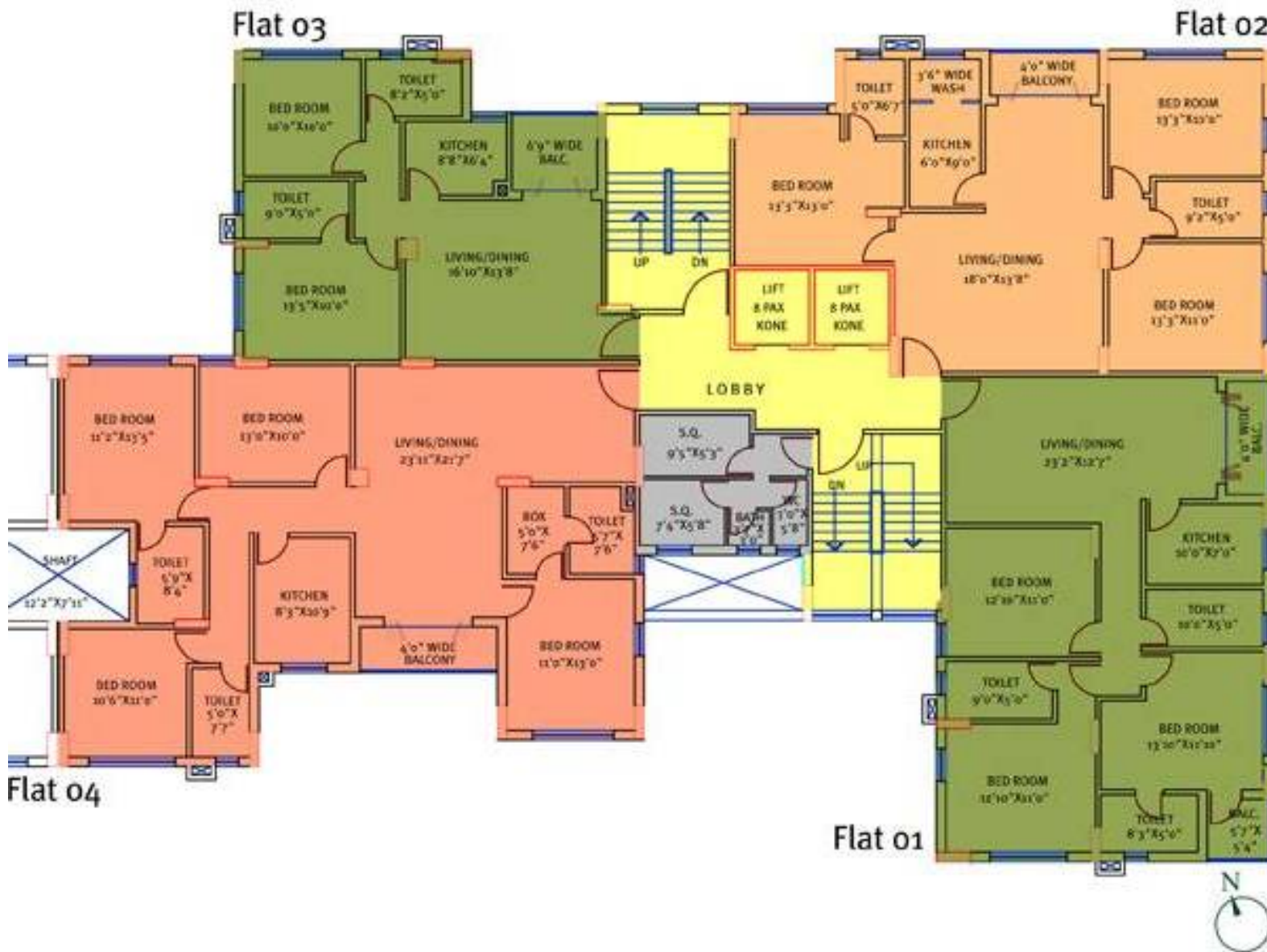
Type	Size (sq.ft)
ASPEN 1 (3/4 BHK)	1355 - 2015



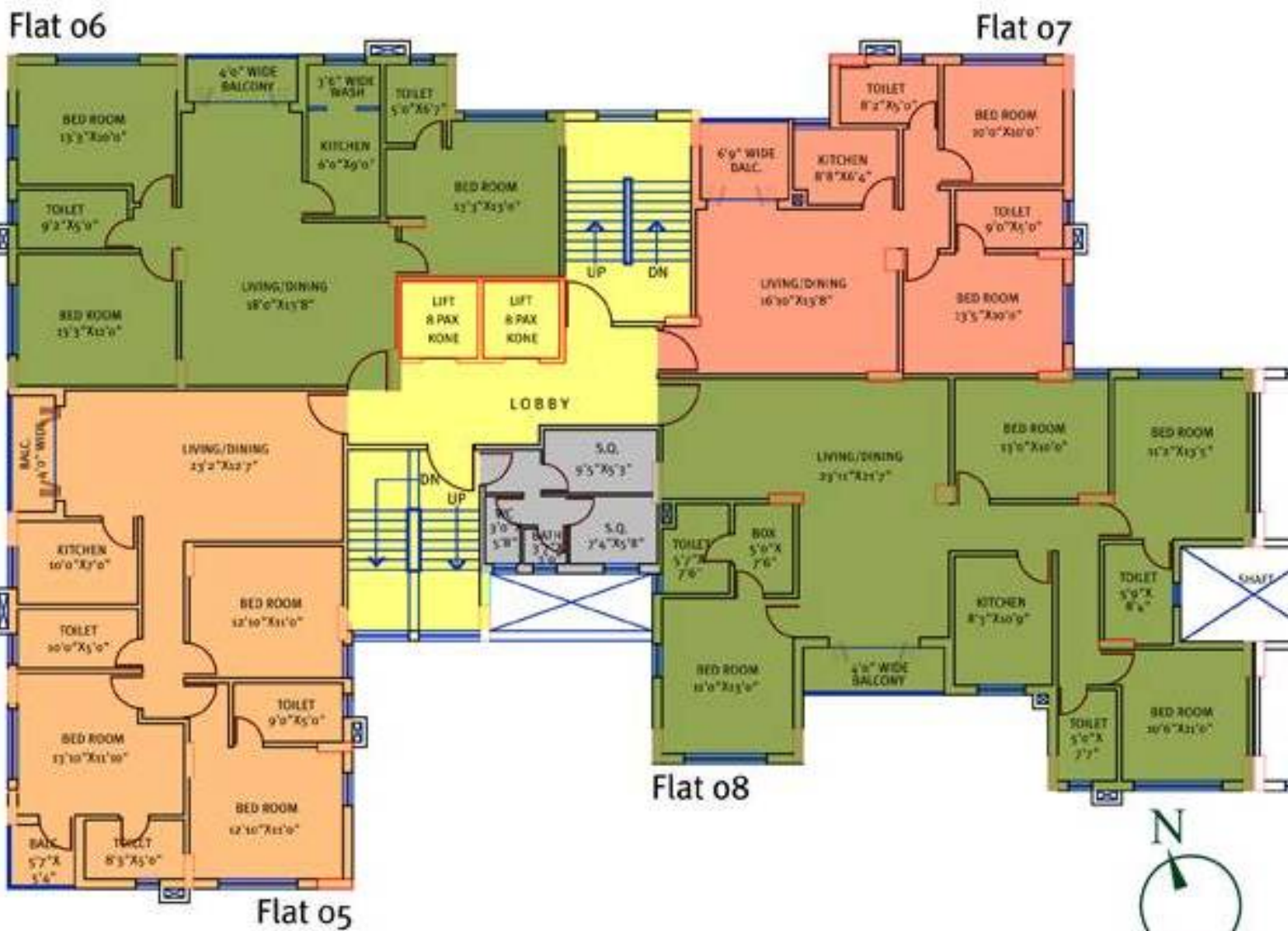
Type	Size (sq.ft)
ASPEN 2 (3/4 BHK)	1355 - 2005



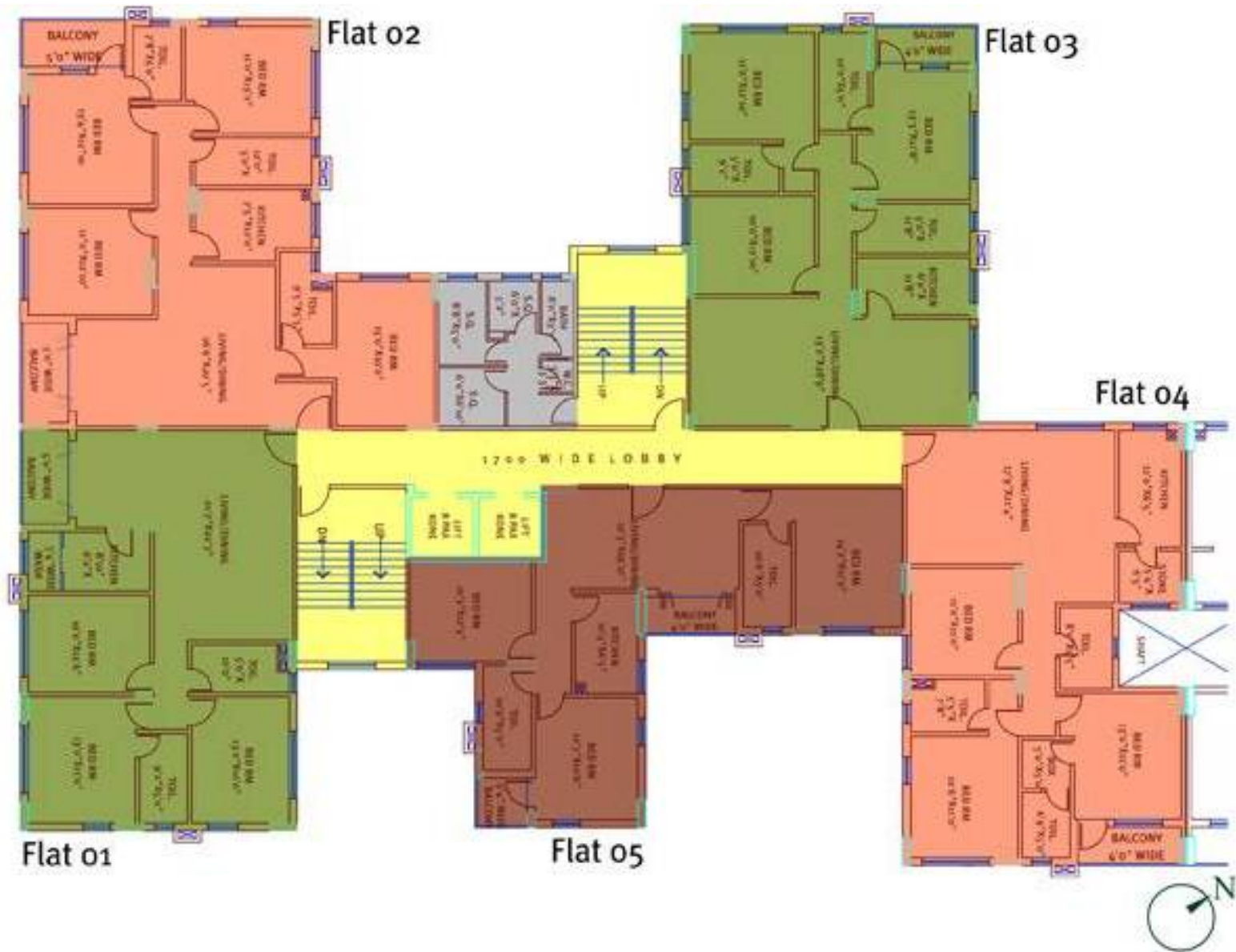
Type	Size (sq.ft)
BIRCH 1 (3/4 BHK)	1030 - 2025



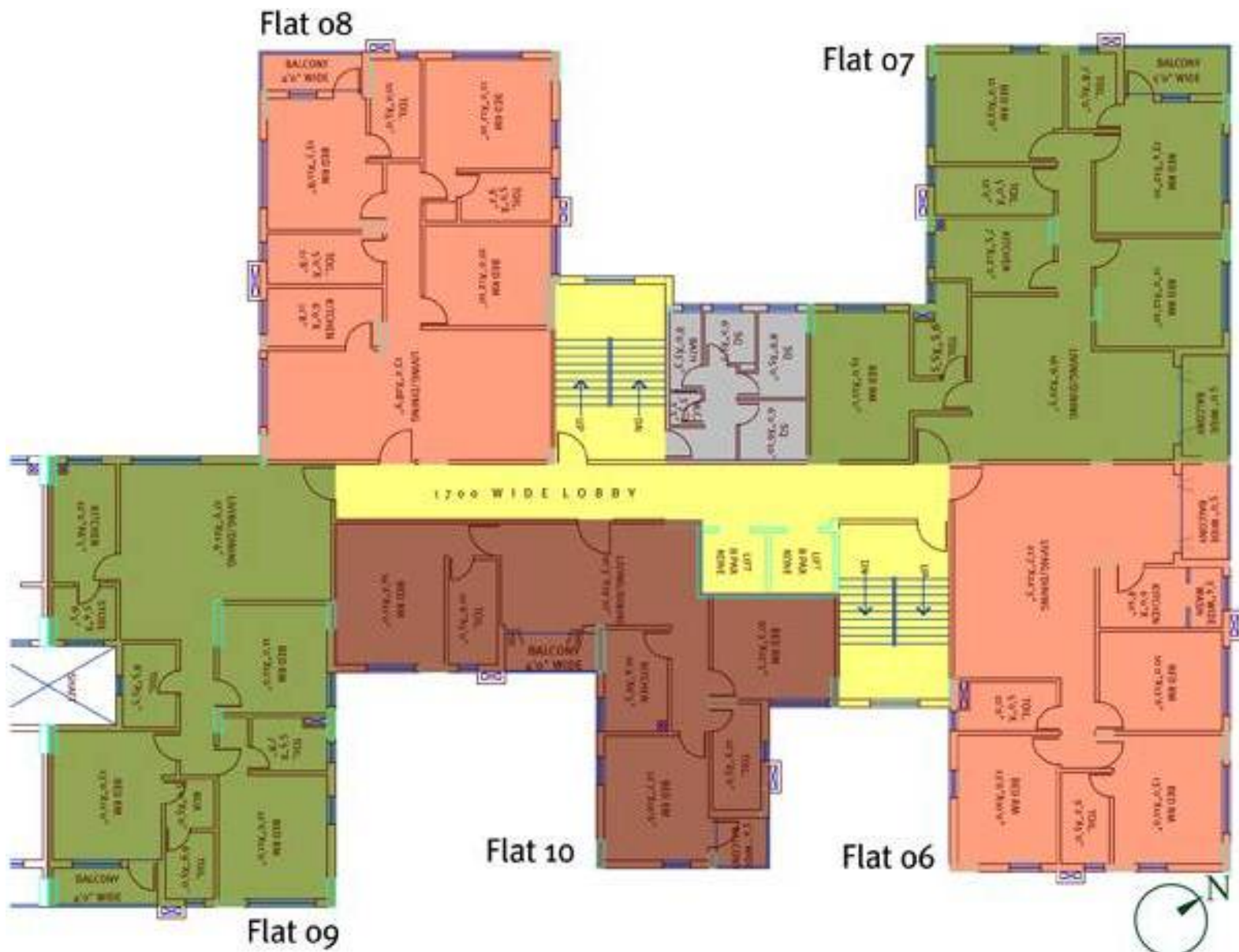
Type	Size (sq.ft)
BIRCH 2 (3/4 BHK)	1030 - 2025



Type	Size (sq.ft)
CYPRUS 1 (3/4 BHK)	1355 - 2015



Type	Size (sq.ft)
CYPRUS 2 (3/4 BHK)	1355 - 2005



DEVELOPER

Siddha is a highclass realestate developer and marketer, with fullfledged offices and facilities in Kolkata and Jaipur. Founded in 1986, Siddha has conceived, designed and built over 3,500 million INR worth of residential and commercial units and townships, creating over 24 lakh sqft of space at premium locations in Kolkata and Jaipur. Raj Aangan, the jewel in our crown, is a 141-acre NRI Township in Jaipur cocreated with the Rajasthan Housing Board.

Led from the front by Chandra Prakash Jain, Group Chairman, Sanjay Jain and Siddharth Sethia, Joint Managing Directors, our mission is to help fill a fundamental void in Indian society-Quality Housing for Homes Offices. Our prime goal, therefore, is to deliver high-design material and construction excellence within committed timeframes at competitive prices.

ARCHITECT

Agrawal & Agrawal, Kolkata and Baroda, have established their own niche in producing highly innovative, aesthetic and functional designs for both residential and commercial complexes. Besides designing the twin tower Infinity complex. Kolkata first intelligent building complex, as well as Forum, the city most happening shopping mall and multiplex, Mr JP Agrawal has emerged as the most sought after designer of some of the imaginative and striking landmarks on Kolkata fast changing skyline. He is also the visionary designer for Siddhas ongoing Raj Aangan project in Jaipur.



BOOKING & PAYMENT

as per construction